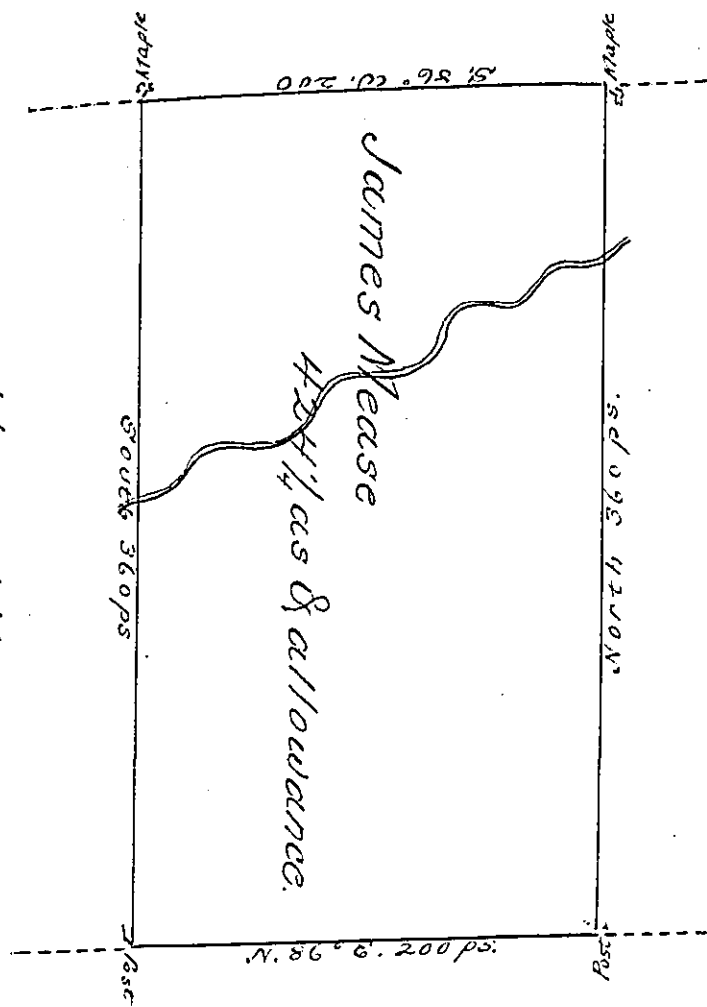


Thos. Shoemaker



C-77-15

A-47-176

Alexr. Nesbitt
A-20-21

C-98-136

A draught of a tract of land called _____ Situate on the water of Chocoma Creek joining Land survd. for Peter Crim and others in the County of Northd. Stoke Township. Containing four Hundred & Twenty four acres $\frac{1}{4}$ allowance of Six p. Cent for Roads &c. Surveyed for James Mease the 2d. Day of August 1784 in Pursuance of a Warrant dated the 2d. Day of July 1784 by

To
 John Lukens Esqr. }
 Survr. Genl. }

Wm. Gray D.S.

IN TESTIMONY that the above is a copy of the original remaining on file in the Department of Internal Affairs of Pennsylvania, made conformably to an Act of Assembly approved the 16th day of February, 1833, I have hereunto set my Hand and caused the Seal of said Department to be affixed at Harrisburg, this second day of October 1900

James W. Patton
 Secretary of Internal Affairs.